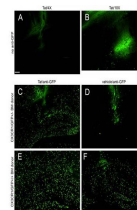


Product Datasheet

GFP (RABBIT) Antibody Biotin Conjugated GRP4053

Description	Anti-GFP (RABBIT) Antibody Biotin Conjugated
Species/Host	Rabbit
Reactivity	Other
Conjugation	Biotin
Tested Applications	ELISA, IF, IHC-P, WB
Form/Appearance	0.02 M Potassium Phosphate, 0.15 M Sodium Chloride, pH 7.2
Concentration	1.0 mg/mL
Note	For research use only.
Isotype	IgG
Clonality	Polyclonal
Source	Anti-Green Fluorescent Protein (GFP) is produced by immunizing GFP containing fusion protein that corresponds to the full length amino acid sequence (246aa) derived from the jellyfish <i>Aequorea victoria</i> .
Entrez	7614553
Dilution Range	ELISA: 1:10,000 - 1:50,000, Immunochemistry: 1:1,000 - 1:5,000, IF Microscopy: 1:5,000, Western Blot: 1:2,000 - 1:10,000
Application Notes	Biotin Conjugated GFP Antibody is suitable for immunoblotting, ELISA, immunohistochemistry, immunomicroscopy as well as other antibody based assays using streptavidin or avidin conjugates requiring lot-to-lot consistency.



Biotin conjugated anti GFP antibody
Immunofluorescence