

## Product Datasheet

### AFP Polyclonal Antibody GRP555

#### Description

Alpha 1 Fetoprotein is a major plasma protein produced by the yolk sac and the liver during fetal life. Alpha fetoprotein expression in adults is often associated with hepatoma or teratoma. However, hereditary persistence of alpha-fetoprotein may also be found in individuals with no obvious pathology. The protein is thought to be the fetal counterpart of serum albumin, and the alpha fetoprotein and albumin genes are present in tandem in the same transcriptional orientation on chromosome 4. Alpha fetoprotein is found in monomeric as well as dimeric and trimeric forms, and binds copper, nickel, fatty acids and bilirubin. The level of alpha fetoprotein in amniotic fluid is used to measure renal loss of protein to screen for spina bifida and anencephaly. Expression has been documented in human adrenal, liver, ovary, testis, and pancreas. ESTs have been isolated from normal human brain, liver/spleen, embryo and uterus tissue libraries.

#### Species/Host

Rabbit

#### Reactivity

Human

#### Conjugation

Unconjugated

#### Tested Applications

IHC-P, WB

#### Immunogen

KLH conjugated synthetic peptide derived from human AFP (public\_immunogen\_range: 570-609/609)

#### Form/Appearance

Aqueous buffered solution containing 1% BSA, 50% glycerol and 0.09% sodium azide.

#### Concentration

1ug/ul

#### Storage

Store at -20°C for 12 months.

#### Note

For research use only.

#### Isotype

IgG

#### Clonality

Polyclonal

#### Purity

Purified by Protein A.

#### Uniprot ID

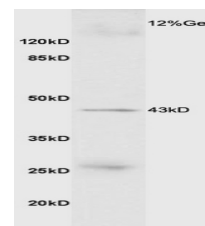
**P02771**

#### Entrez

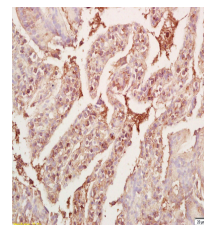
**174**

#### Dilution Range

WB: 1:300-1000, IHC-P: 1:200-400



WB of GRP555



IHC-P of GRP555