

Product Datasheet

ROCK1(Thr455/Ser456) Polyclonal Antibody GRP551

Description

Protein kinase which is a key regulator of actin cytoskeleton and cell polarity. Involved in regulation of smooth muscle contraction, actin cytoskeleton organization, stress fiber and focal adhesion formation, neurite retraction, cell adhesion and motility via phosphorylation of DAPK3, GFAP, LIMK1, LIMK2, MYL9/MLC2, PFN1 and PPP1R12A. Phosphorylates FHOD1 and acts synergistically with it to promote SRC-dependent non-apoptotic plasma membrane blebbing. Phosphorylates JIP3 and regulates the recruitment of JNK to JIP3 upon UVB-induced stress. Acts as a suppressor of inflammatory cell migration by regulating PTEN phosphorylation and stability. Acts as a negative regulator of VEGF-induced angiogenic endothelial cell activation. Required for centrosome positioning and centrosome-dependent exit from mitosis. Plays a role in terminal erythroid differentiation. May regulate closure of the eyelids and ventral body wall by inducing the assembly of actomyosin bundles. Promotes keratinocyte terminal differentiation. Involved in osteoblast compaction through the fibronectin fibrillogenesis cell-mediated matrix assembly process, essential for osteoblast mineralization.

Species/Host

Rabbit

Reactivity

Human, Mouse, Rat

Conjugation

Unconjugated

Tested Applications

IHC-P, WB

Immunogen

KLH conjugated synthetic phosphopeptide derived from human ROCK1 around the phosphorylation site of Thr455/Ser456 (public_immunogen_range: 440-465/1354)

Form/Appearance

Aqueous buffered solution containing 1% BSA, 50% glycerol and 0.09% sodium azide.

Concentration

1ug/ul

Storage

Store at -20°C for 12 months.

Note

For research use only.

Isotype

IgG

Clonality

Polyclonal

Purity

Purified by Protein A.

Uniprot ID

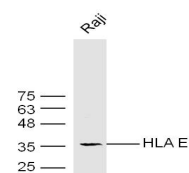
[Q13464](#)

Entrez

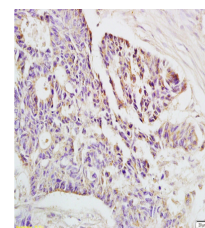
[6093](#)

Dilution Range

WB: 1:300-1000, IHC-P: 1:200-400



WB of GRP551



IHC-P of GRP551