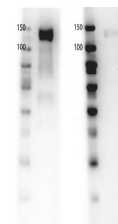


## Product Datasheet

### GAB1 (RABBIT) Antibody GRP3939

<b>Description</b>	Anti-GAB1 (RABBIT) Antibody
<b>Species/Host</b>	Rabbit
<b>Reactivity</b>	Human
<b>Conjugation</b>	Unconjugated
<b>Tested Applications</b>	ELISA, WB
<b>Form/Appearance</b>	0.02 M Potassium Phosphate, 0.15 M Sodium Chloride, pH 7.2
<b>Concentration</b>	0.62 mg/mL
<b>Note</b>	For research use only.
<b>Isotype</b>	IgG
<b>Clonality</b>	Polyclonal
<b>Source</b>	Anti-GAB1 Antibody was produced in rabbits by repeated immunizations with a synthetic peptide corresponding to residues surrounding Y659 of human GAB1 protein.
<b>Uniprot ID</b>	<a href="#">Q13480</a>
<b>Entrez</b>	<a href="#">21926</a>
<b>Dilution Range</b>	ELISA: 1:2,000 - 1:10,000, Western Blot: 1:500-1:2000
<b>Application Notes</b>	Anti-GAB1 Antibody has been tested for use in ELISA and by western blot. Specific conditions for reactivity should be optimized by the end user. Expect a predominant band at 76.6 kDa by western blotting in the appropriate cell lysate or extract.



Western Blot - Rabbit anti-GAB1