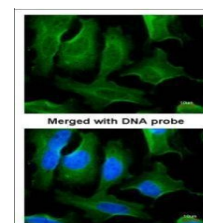


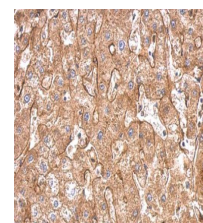
## Product Datasheet

### Fibronectin antibody [N1N2], N-term GRP53

|                            |  |
|----------------------------|--|
| <b>Description</b>         | This gene encodes fibronectin, a glycoprotein present in a soluble dimeric form in plasma, and in a dimeric or multimeric form at the cell surface and in extracellular matrix. Fibronectin is involved in cell adhesion and migration processes including embryogenesis, wound healing, blood coagulation, host defense, and metastasis. The gene has three regions subject to alternative splicing, with the potential to produce 20 different transcript variants. However, the full-length nature of some variants has not been determined. [provided by RefSeq] |
| <b>Species/Host</b>        | Rabbit   |
| <b>Reactivity</b>          | Human, Mouse, Rat  |
| <b>Conjugation</b>         | Unconjugated   |
| <b>Tested Applications</b> | ELISA, ICC, IF, IHC-Fr, IHC-P, IP, WB  |
| <b>Immunogen</b>           | Recombinant protein encompassing a sequence within the N-terminus region of human Fibronectin. The exact sequence is proprietary.  |
| <b>Form/Appearance</b>     | Liquid: 1XPBS, 1% BSA, 20% Glycerol (pH7). 0.025% ProClin 300 was added as a preservative.   |
| <b>Concentration</b>       | 0.14 mg/ml   |
| <b>Storage</b>             | Store as concentrated solution. Centrifuge briefly prior to opening. For short-term storage (1-2 weeks), store at 4°C. For long-term storage, aliquot and store at -20°C or below. Avoid multiple freeze-thaw cycles.  |
| <b>Note</b>                | For research use only.   |
| <b>Isotype</b>             | IgG  |
| <b>Clonality</b>           | Polyclonal   |
| <b>Purity</b>              | Purified by antigen-affinity chromatography.   |
| <b>Uniprot ID</b>          | <b>P02751</b>  |
| <b>Entrez</b>              | <b>2335</b>  |
| <b>Dilution Range</b>      | WB: 1:500-1:3000, ICC: 1:100-1:1000, IHC-P: 1:100-1:1000, IP: 1:100-1:500, ELISA: 1:1000-1:10000   |



Immunofluorescence analysis of paraformaldehyde-fixed HeLa, using Fibronectin (GRP505) antibody at 1:200 dilution.



Fibronectin antibody [N1N2], N-term detects FN1 protein at cytosol on human hepatoma by immunohistochemical analysis. Sample: Paraffin-embedded hepatoma. Fibronectin antibody [N1N2], N-term (GRP505) dilution: 1:500.