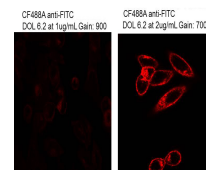


## Product Datasheet

### Fluorescein (MOUSE) Monoclonal Antibody GRP2039

<b>Description</b>	Anti-Fluorescein (MOUSE) Monoclonal Antibody
<b>Species/Host</b>	Mouse
<b>Conjugation</b>	Unconjugated
<b>Tested Applications</b>	ELISA, FC, IHC-P, WB
<b>Form/Appearance</b>	0.02 M Potassium Phosphate, 0.15 M Sodium Chloride, pH 7.2
<b>Concentration</b>	0.51mg/mL
<b>Note</b>	For research use only.
<b>Isotype</b>	IgG2a
<b>Clonality</b>	Monoclonal
<b>Purity</b>	Fluorescein Antibody was prepared from mouse ascites by Protein A/G chromatography. Assay by immunoelectrophoresis resulted in a single precipitin arc against anti-mouse serum, Fluorescein conjugated IgG and Fluorescein conjugated Bovine Serum Albumin.
<b>Source</b>	Fluorescein conjugated to Mouse IgG
<b>Clone ID</b>	8B9.C6.D3
<b>Entrez</b>	<b>257630</b>
<b>Dilution Range</b>	ELISA: 1:5,000 - 1:30,000, Flow Cytometry: 1-2 µg/mL, Immunochemistry: 1:250 - 1:1,500, Western Blot: 1:500 - 1:3,000



Immunofluorescence  
Microscopy  
- Mouse Anti-Fluorescein

**Application Notes** Anti-Fluorescein Antibody is suitable for immunomicroscopy, in situ hybridization and flow cytometry or FACS analysis as well as other antibody based fluorescent assays requiring lot-to-lot consistency.