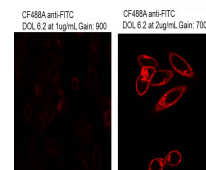


Product Datasheet

Fluorescein (MOUSE) Monoclonal Antibody GRP2037

Description	Anti-Fluorescein (MOUSE) Monoclonal Antibody
Species/Host	Mouse
Conjugation	Unconjugated
Tested Applications	ELISA, FC, IHC-P, WB
Form/Appearance	0.02 M Potassium Phosphate, 0.15 M Sodium Chloride, pH 7.2
Concentration	1.0 mg/ml
Note	For research use only.
Isotype	IgG2a
Clonality	Monoclonal
Purity	Fluorescein Antibody was prepared from mouse ascites by Protein A chromatography. Assay by immunoelectrophoresis resulted in a single precipitin arc against anti-mouse serum, Fluorescein conjugated IgG and Fluorescein conjugated Bovine Serum Albumin.
Source	Fluorescein conjugated to Mouse IgG
Clone ID	8B9.C6.D3
Entrez	257630
Dilution Range	ELISA: 1:5,000 - 1:30,000, Flow Cytometry: 1-2 µg /mL, Immunochemistry: 1:250 - 1:1,500, Western Blot: 1:500 - 1:3,000

Application Notes Anti-Fluorescein Antibody is suitable for immunomicroscopy, in situ hybridization and flow cytometry or FACS analysis as well as other antibody based fluorescent assays requiring lot-to-lot consistency.



Immunofluorescence
Microscopy
- Mouse Anti-Fluorescein