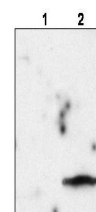


Product Datasheet

Feline Immunodeficiency Virus Matrix Protein p15 (RABBIT) Antibody GRP3580

Description	Anti-Feline Immunodeficiency Virus Matrix Protein p15 (RABBIT) Antibody
Species/Host	Rabbit
Reactivity	Bacteria
Conjugation	Unconjugated
Tested Applications	ELISA, IHC-P, WB
Form/Appearance	0.02 M Potassium Phosphate, 0.15 M Sodium Chloride, pH 7.2
Concentration	1.22 mg/mL
Note	For research use only.
Isotype	IgG
Clonality	Polyclonal
Purity	This affinity purified antibody is directed against FIV Matrix Protein p15. The product was affinity purified from monospecific antiserum by immunoaffinity chromatography.
Source	This affinity purified antibody was prepared from whole rabbit serum produced by repeated immunizations with a synthetic peptide corresponding to amino acids from an internal region of FIV Matrix Protein p15.
Uniprot ID	P16087
Entrez	397129
Dilution Range	ELISA: 1:5,000 - 1:20,000, Immunochemistry: User Optimized, Western Blot: 1:1,000 - 1:10,000



Anti-FIV Matrix Protein p15 Antibody - Western Blot