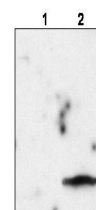


## Product Datasheet

# Feline Immunodeficiency Virus Matrix Protein p15 (RABBIT) Antibody GRP3580

<b>Description</b>	Anti-Feline Immunodeficiency Virus Matrix Protein p15 (RABBIT) Antibody
<b>Species/Host</b>	Rabbit
<b>Reactivity</b>	Bacteria
<b>Conjugation</b>	Unconjugated
<b>Tested Applications</b>	ELISA, IHC-P, WB
<b>Form/Appearance</b>	0.02 M Potassium Phosphate, 0.15 M Sodium Chloride, pH 7.2
<b>Concentration</b>	1.22 mg/mL
<b>Note</b>	For research use only.
<b>Isotype</b>	IgG
<b>Clonality</b>	Polyclonal
<b>Purity</b>	This affinity purified antibody is directed against FIV Matrix Protein p15. The product was affinity purified from monospecific antiserum by immunoaffinity chromatography.
<b>Source</b>	This affinity purified antibody was prepared from whole rabbit serum produced by repeated immunizations with a synthetic peptide corresponding to amino acids from an internal region of FIV Matrix Protein p15.
<b>Uniprot ID</b>	<b>P16087</b>
<b>Entrez</b>	<b>397129</b>
<b>Dilution Range</b>	ELISA: 1:5,000 - 1:20,000, Immunochemistry: User Optimized, Western Blot: 1:1,000 - 1:10,000



Anti-FIV Matrix Protein p15 Antibody - Western Blot