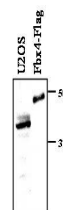


Product Datasheet

F-box only protein 4 (FBX4) (RABBIT) Antibody GRP1555

Species/Host	Rabbit
Reactivity	Human, Mouse
Conjugation	Unconjugated
Tested Applications	ELISA, WB
Form/Appearance	0.02 M Potassium Phosphate, 0.15 M Sodium Chloride, pH 7.2
Concentration	85 mg/mL
Note	For research use only.
Isotype	Antiserum
Clonality	Polyclonal
Purity	This antiserum is directed against human and mouse FBX4. Reactivity against homologues from other sources is not known.
Uniprot ID	Q8CHQ0 mouse
Entrez	3984
Dilution Range	ELISA: 1:5,000 - 1:25,000, Western Blot: 1:500 - 1:3000



Anti-F-Box Only Protein 4
(FBX4) Antibody - Western
Blot