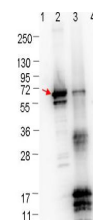


## Product Datasheet

### ErpN/OspE (RABBIT) Antibody GRP2355

<b>Description</b>	Anti-ErpN/OspE (RABBIT) Antibody
<b>Species/Host</b>	Rabbit
<b>Reactivity</b>	Bacteria
<b>Conjugation</b>	Unconjugated
<b>Tested Applications</b>	ELISA, WB
<b>Form/Appearance</b>	0.02 M Potassium Phosphate, 0.15 M Sodium Chloride, pH 7.2
<b>Concentration</b>	1.1 mg/mL
<b>Note</b>	For research use only.
<b>Isotype</b>	IgG
<b>Clonality</b>	Polyclonal
<b>Source</b>	MBP-fusion protein corresponding to Borrelia burgdorferi ErpN/OspE protein.
<b>Uniprot ID</b>	<b>H7C7N5</b>
<b>Entrez</b>	<b>1039460</b>
<b>Dilution Range</b>	ELISA: >1:5,000, Western Blot: 1:1,000
<b>Application Notes</b>	Anti-ErpN/OspE antibody has been tested in Western Blot. Specific conditions for reactivity should be optimized by the end user. Expect a band at 17.1 kDa in size corresponding to ErpN/OspE by Western blotting in the appropriate cell lysate or extract.



Anti-ErpN/OspE Antibody -  
Western Blot