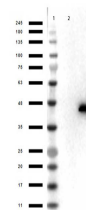


## Product Datasheet

### ERK2 (MOUSE) Monoclonal Antibody GRP2143

<b>Description</b>	Anti-ERK2 (MOUSE) Monoclonal Antibody
<b>Species/Host</b>	Mouse
<b>Reactivity</b>	Human, Mouse, Rat
<b>Conjugation</b>	Unconjugated
<b>Tested Applications</b>	ELISA, WB
<b>Form/Appearance</b>	0.02 M Potassium Phosphate, 0.15 M Sodium Chloride, pH 7.2
<b>Concentration</b>	1.0 mg/ml
<b>Note</b>	For research use only.
<b>Isotype</b>	IgG
<b>Clonality</b>	Monoclonal
<b>Source</b>	Anti-ERK2 Monoclonal Antibody was produced in mice by repeated immunizations with synthetic peptide corresponding to amino acid residues near an internal region of ERK2 conjugated to KLH.
<b>Clone ID</b>	3H9.A1.A8
<b>Uniprot ID</b>	<b>P28482</b>
<b>Entrez</b>	<b>286887</b>
<b>Dilution Range</b>	ELISA: 1:40,000, Western Blot: 1µg /mL

**Application Notes** Anti-ERK 2 (MOUSE) antibody is suitable for use in ELISA and Western Blotting. Specific conditions of reactivity should be optimized by the end user. Expect a band of approximately 41 kDa.



Western Blot of Mouse anti-ERK2 Antibody.