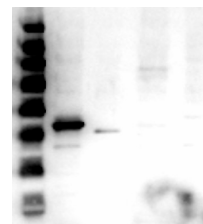


Product Datasheet

ERK1 (RABBIT) Antibody GRP3746

Description	Anti-ERK1 (RABBIT) Antibody
Species/Host	Rabbit
Reactivity	Human, Mouse, Rat
Conjugation	Unconjugated
Tested Applications	ELISA, WB
Form/Appearance	0.02 M Potassium Phosphate, 0.15 M Sodium Chloride, pH 7.2
Concentration	1.0 mg/mL
Note	For research use only.
Isotype	IgG
Clonality	Polyclonal
Source	Anti-ERK1 Antibody was produced in rabbits by repeated immunizations with synthetic peptide corresponding to amino acid residues near the C-terminus conjugated to KLH.
Uniprot ID	P27361
Entrez	3640338
Dilution Range	ELISA: 1:40,000, Western Blot: 1µg /mL

Application Notes Anti-ERK 1 (RABBIT) antibody is suitable for use in ELISA and Western Blotting. Specific conditions of reactivity should be optimized by the end user. Expect a band of approximately 43 kDa.



Western Blot of Anti-ERK1
C-Term Antibody