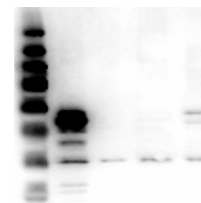


## Product Datasheet

### ERK1 (RABBIT) Antibody GRP3743

<b>Description</b>	Anti-ERK1 (RABBIT) Antibody
<b>Species/Host</b>	Rabbit
<b>Reactivity</b>	Human, Mouse, Rat
<b>Conjugation</b>	Unconjugated
<b>Tested Applications</b>	ELISA, WB
<b>Form/Appearance</b>	0.02 M Potassium Phosphate, 0.15 M Sodium Chloride, pH 7.2
<b>Concentration</b>	1.0 mg/mL
<b>Note</b>	For research use only.
<b>Isotype</b>	IgG
<b>Clonality</b>	Polyclonal
<b>Source</b>	Anti-ERK1 Antibody was produced in rabbits by repeated immunizations with synthetic peptide corresponding to amino acid residues near the N-terminus conjugated to KLH.
<b>Uniprot ID</b>	<a href="#">P27361</a>
<b>Entrez</b>	<a href="#">3630</a>
<b>Dilution Range</b>	ELISA: 1:40,000, Western Blot: 1.0 ug/mL
<b>Application Notes</b>	Anti-ERK 1 (RABBIT) antibody is suitable for use in ELISA and Western Blotting. Specific conditions of reactivity should be optimized by the end user. Expect a band of approximately 43 kDa.



Western Blot of Rabbit  
Anti-ERK1 N-Term  
Antibody