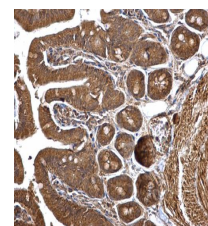


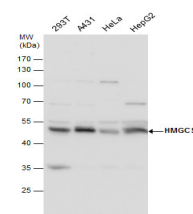
Product Datasheet

HMGCS1 antibody GRP50

Description	HMGCS1 antibody
Species/Host	Rabbit
Reactivity	Human, Mouse
Conjugation	Unconjugated
Tested Applications	ICC, IF, IHC-P, WB
Immunogen	Recombinant protein encompassing a sequence within the centre region of human HMGCS1. The exact sequence is proprietary.
Form/Appearance	Liquid: 1XPBS, 20% Glycerol (pH7). 0.025% ProClin 300 was added as a preservative.
Concentration	1 mg/ml
Storage	Store as concentrated solution. Centrifuge briefly prior to opening vial. For short-term storage (1-2 weeks), store at 4°C. For long-term storage, aliquot and store at -20°C or below. Avoid multiple freeze-thaw cycles.
Note	For research use only.
Isotype	IgG
Clonality	Polyclonal
Purity	Purified by antigen-affinity chromatography.
Uniprot ID	Q01581
Entrez	3157
Dilution Range	WB: 1:500-1:10000, ICC: 1:100-1:1000, IHC-P: 1:100-1:1000



HMGCS1 antibody detects HMGCS1 protein at cytosol on mouse intestine by immunohistochemical analysis.
Sample: Paraffin-embedded mouse intestine. HMGCS1 antibody (GRP502) dilution: 1:500.



HMGCS1 antibody detects HMGCS1 protein by western blot analysis. Various whole cell extracts (30 µg) were separated by 10% SDS-PAGE, and the membrane was blotted with HMGCS1 antibody (GRP502) diluted by 1:5000. The HRP-conjugated anti-rabbit IgG antibody