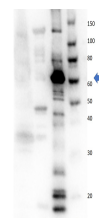


Product Datasheet

Eg5 (RABBIT) Antibody GRP1597

Species/Host	Rabbit
Reactivity	Human
Conjugation	Unconjugated
Tested Applications	ELISA, IHC-P, WB
Form/Appearance	0.02 M Potassium Phosphate, 0.15 M Sodium Chloride, pH 7.2
Concentration	46 mg/ml
Note	For research use only.
Isotype	Antiserum
Clonality	Polyclonal
Source	Eg5 was prepared from whole rabbit serum produced by repeated immunizations with a truncated Eg5 construct expressed in E. coli corresponding to human Eg5 protein.
Uniprot ID	P33176
Entrez	10848
Dilution Range	ELISA: 1:10,000, Immunochemistry: User optimized, Western Blot: 1:1000
Application Notes	Eg5 antibody has been tested for use in ELISA and western blot. For western blots expect a band of approximately 72 kDa in size corresponding to truncated kinesin-1 protein. Specific conditions for reactivity should be optimized by the end user.



Western Blot of Rabbit
Anti-Eg-5 Antibody