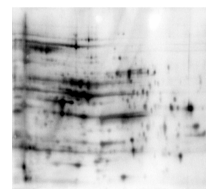


Product Datasheet

E.Coli Host Cell Protein (HCP) (RABBIT) Antibody GRP1601

| | |
|---------------------|--|
| Species/Host | Rabbit |
| Reactivity | E.Coli |
| Conjugation | Unconjugated |
| Tested Applications | ELISA, WB |
| Form/Appearance | 0.02 M Potassium Phosphate, 0.15 M Sodium Chloride, pH 7.2 |
| Concentration | 77.5 mg/mL |
| Note | For research use only. |
| Isotype | Antiserum |
| Clonality | Polyclonal |
| Source | Anti-Host Cell Proteins Antibody was prepared blending antibodies that have been separately developed by repeated immunizations with a mixture of high molecular weight (HMW) and a mixture of low molecular weight (LMW) proteins from E.Coli (BL21). |
| Entrez | 3064 |
| Dilution Range | ELISA: 1:1000-1:2000, Western Blot: 1:500 - 1:1000 |
| Application Notes | Anti-Host Cell Proteins Antibody detects over 300 E.coli proteins and is suitable for western blotting and ELISA. |



2D Western Blot of
Anti-HCP
Antibody