

## Product Datasheet

### E.Coli Combined Host Cell Protein Biotin Conjugated (HCP) Antibody GRP2471

**Description** Anti-E.Coli Combined Host Cell Protein Biotin Conjugated (HCP) Antibody

**Species/Host** Rabbit

**Reactivity** E.Coli

**Conjugation** Biotin

**Tested Applications** ELISA, WB

**Form/Appearance** 0.02 M Potassium Phosphate, 0.15 M Sodium Chloride, pH 7.2

**Concentration** 1.0 mg/mL

**Note** For research use only.

**Isotype** IgG

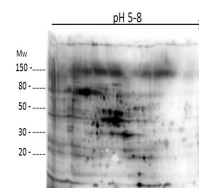
**Clonality** Polyclonal

**Source** Anti-Host Cell Proteins Antibody was prepared by repeated immunizations with a full range of high molecular weight (HMW) and low molecular weight (LMW) proteins from E.Coli (BL21).

**Entrez** **56897**

**Dilution Range** ELISA: 1:1000-1:2000, Fluorochrome: 10-20, Western Blot: 1:500-1:1000

**Application Notes** Anti-Host Cell Proteins Antibody detects over 300 E.coli proteins and is suitable for western blotting and ELISA.



2D Western Blot of E.coli Host Cell Protein.