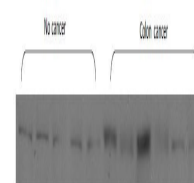


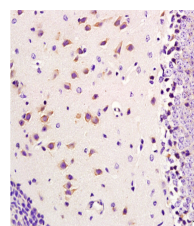
## Product Datasheet

### Mst1(Thr183)/Mst2(Thr180) Antibody GRP510

<b>Description</b>	Protein which catalyzes the phosphorylation of serine or threonine residues on target proteins by using ATP as phosphate donor. Such phosphorylation may cause changes in the function of the target protein. Protein kinases share a conserved catalytic core common to both serine/ threonine and tyrosine protein kinases.
<b>Species/Host</b>	Rabbit
<b>Reactivity</b>	Human, Mouse, Rat
<b>Conjugation</b>	Unconjugated
<b>Tested Applications</b>	FC, IHC-P, WB
<b>Immunogen</b>	KLH conjugated synthetic phosphopeptide derived from human Mst1 around the phosphorylation site of Thr183 (public_immunogen_range: 150-200/487)
<b>Form/Appearance</b>	Aqueous buffered solution containing 1% BSA, 50% glycerol and 0.09% sodium azide.
<b>Concentration</b>	1ug/ul
<b>Storage</b>	Store at -20°C for 12 months.
<b>Note</b>	For research use only.
<b>Isotype</b>	IgG
<b>Clonality</b>	Polyclonal
<b>Purity</b>	Purified by Protein A.
<b>Uniprot ID</b>	<b>Q13043, Q13188</b>
<b>Entrez</b>	<b>6789, 6788</b>
<b>Dilution Range</b>	WB: 1:300-1000, FC: 1:20-100, IHC-P: 1:200-400



WB of GRP510



IHC-P of GRP510