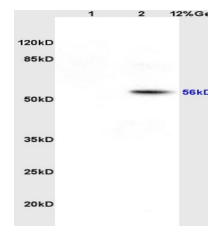


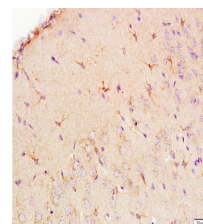
Product Datasheet

cdc25C (Ser216) Polyclonal Antibody GRP504

Description	Functions as a dosage-dependent inducer in mitotic control. Tyrosine protein phosphatase required for progression of the cell cycle. When phosphorylated, highly effective in activating G2 cells into prophase. Directly dephosphorylates CDK1 and activates its kinase activity.
Species/Host	Rabbit
Reactivity	Human
Conjugation	Unconjugated
Tested Applications	IHC-P, WB
Immunogen	KLH conjugated synthetic phosphopeptide derived from human cdc25C around the phosphorylation site of Ser216 (public_immunogen_range: 190-240/473)
Form/Appearance	Aqueous buffered solution containing 1% BSA, 50% glycerol and 0.09% sodium azide.
Concentration	1ug/ul
Storage	Store at -20°C for 12 months.
Note	For research use only.
Isotype	IgG
Clonality	Polyclonal
Purity	Purified by Protein A.
Uniprot ID	P30307
Entrez	995
Dilution Range	WB: 1:300-1000, IHC-P: 1:200-400



WB of GRP504



IHC-P of GRP504