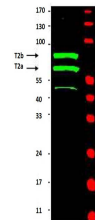


## Product Datasheet

### Cyclin T2 (RABBIT) Antibody GRP1553

<b>Species/Host</b>	Rabbit
<b>Reactivity</b>	Human
<b>Conjugation</b>	Unconjugated
<b>Tested Applications</b>	ELISA, IP, WB
<b>Concentration</b>	85 mg/mL
<b>Note</b>	For research use only.
<b>Isotype</b>	Antiserum
<b>Clonality</b>	Polyclonal
<b>Source</b>	This antibody was prepared from whole rabbit serum produced by repeated immunizations with a recombinant protein corresponding to amino acids 1-584 of human Cyclin T2a protein.
<b>Uniprot ID</b>	<b>O60583</b>
<b>Entrez</b>	<b>7850</b>
<b>Dilution Range</b>	ELISA: 1:5,000 - 1:20,000, Immunoprecipitation: 1:100, Western Blot: 1:500 - 1:2,000



Anti-Cyclin T2 Antibody -  
Western Blot