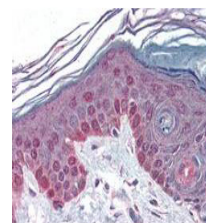


## Product Datasheet

### Cyclin T1 (RABBIT) Antibody GRP1507

<b>Species/Host</b>	Rabbit
<b>Reactivity</b>	Human, Mouse, Rat
<b>Conjugation</b>	Unconjugated
<b>Tested Applications</b>	ELISA, IHC-P, IP, WB
<b>Form/Appearance</b>	0.02 M Potassium Phosphate, 0.15 M Sodium Chloride, pH 7.2
<b>Concentration</b>	75 mg/mL
<b>Note</b>	For research use only.
<b>Isotype</b>	Antiserum
<b>Clonality</b>	Polyclonal
<b>Source</b>	Cyclin T1 peptide corresponding to an internal region of the human protein conjugated to Keyhole Limpet Hemocyanin (KLH).
<b>Uniprot ID</b>	<b>O60563</b>
<b>Entrez</b>	<b>3554</b>
<b>Dilution Range</b>	ELISA: 1:1,000 - 1:5,000,Immunochemistry: 1:200 - 1:1,000,Immunoprecipitation: 1:100,Western Blot: 1:500 - 1:2,000



Anti-Cyclin T1 Antibody -  
Immunohistochemistry