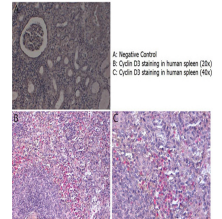


Product Datasheet

Cyclin D3 (RABBIT) Antibody GRP3733

Description	Anti-Cyclin D3 (RABBIT) Antibody
Species/Host	Rabbit
Reactivity	Human, Mouse
Conjugation	Unconjugated
Tested Applications	ELISA, FC, IHC-P, IP, WB
Form/Appearance	0.02 M Potassium Phosphate, 0.15 M Sodium Chloride, pH 7.2
Concentration	1.0 mg/ml
Note	For research use only.
Isotype	IgG
Clonality	Polyclonal
Source	This affinity purified antibody was prepared from whole rabbit serum produced by repeated immunizations with a synthetic peptide corresponding to the C-terminal domain of mouse Cyclin D3 protein.
Uniprot ID	P30282
Entrez	3557
Dilution Range	ELISA: 1:1000-1:5000, Flow Cytometry: 4µg /mL, Immunochemistry: 4µg /mL, Immunoprecipitation: 5µg /mL, Western Blot: 1.0 ug/ml



Cyclin D3 Antibody -
Immunohistochemistry