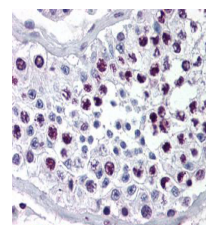


Product Datasheet

Cyclin A (RABBIT) Antibody GRP1503

Species/Host	Rabbit
Reactivity	Human
Conjugation	Unconjugated
Tested Applications	ELISA, IHC-P, IP, WB
Concentration	80 mg/mL
Note	For research use only.
Isotype	Antiserum
Clonality	Polyclonal
Source	Anti-Cyclin-A Antibody was produced by repeated immunizations with a recombinant protein corresponding to the human cyclin A.
Uniprot ID	P20248
Entrez	3552
Dilution Range	ELISA: 1:5,000 - 1:20,000, Immunochemistry: 1:100, Immunoprecipitation: 1:100, Western Blot: 1:500 - 1:5,000
Application Notes	Anti-Cyclin-A antibody is suitable for the detection by immunoblot, ELISA, IHC, and IP of human, rat and mouse Cyclin A. Researchers should determine optimal titers for applications that are not stated below.



Anti-Cyclin A Antibody -
Immunohistochemistry