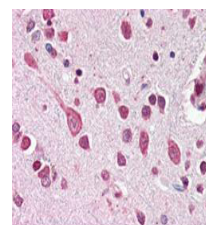


Product Datasheet

Cul7 (C-terminal specific) (RABBIT) Antibody GRP1561

Species/Host	Rabbit
Reactivity	Human
Conjugation	Unconjugated
Tested Applications	ELISA, IHC-P, IP, WB
Concentration	85 mg/mL
Note	For research use only.
Isotype	Antiserum
Clonality	Polyclonal
Purity	This product is monospecific antiserum processed by delipidation and defibrination followed by sterile filtration. This product reacts with human and mouse Cullin 7. Cross reactivity with other human cullins may occur.
Source	This antibody was prepared from whole rabbit serum produced by repeated immunizations with a synthetic peptide corresponding to the C-Terminus region near amino acids 1675-1698 of Human Cul7 coupled to KLH.
Uniprot ID	Q14999
Entrez	9869
Dilution Range	ELISA: 1:2,000 - 1:10,000,Immunochemistry: User Optimized,Immunoprecipitation: User Optimized,Western Blot: 1:500 - 1:1,000



Anti-CUL7 Antibody -
Immunohistochemistry