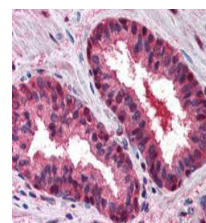


Product Datasheet

Cul2 (C-terminal specific) (RABBIT) Antibody GRP1557

Species/Host	Rabbit
Reactivity	Human
Conjugation	Unconjugated
Tested Applications	ELISA, IHC-P, IP, WB
Concentration	85 mg/mL
Note	For research use only.
Isotype	Antiserum
Clonality	Polyclonal
Purity	Antibody is monospecific antiserum processed by delipidation and defibrination followed by sterile filtration. This product reacts with human Cullin 2. Cross reactivity with Cul2 from other sources has not been determined.
Source	Anti-Cul2 was prepared from whole rabbit serum produced by repeated immunizations with a synthetic peptide corresponding to the C-Terminus region near amino acids 720-745 of Human Cul2 coupled to KLH.
Uniprot ID	Q13617
Entrez	1401
Dilution Range	ELISA: 1:2,000 - 1:10,000, Immunochemistry: User Optimized, Immunoprecipitation: 1:500, Western Blot: 1:500 - 1:1,000



Anti-CUL2 Antibody –
Immunohistochemistry