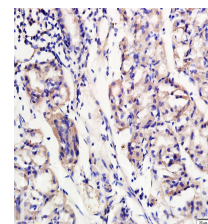


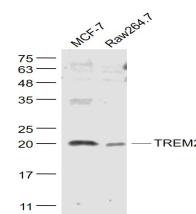
## Product Datasheet

### TREM2 Polyclonal Antibody GRP489

<b>Description</b>	May have a role in chronic inflammations and may stimulate production of constitutive rather than inflammatory chemokines and cytokines. Forms a receptor signaling complex with TYROBP and triggers activation of the immune responses in macrophages and dendritic cells.
<b>Species/Host</b>	Rabbit
<b>Reactivity</b>	Human, Mouse, Rat
<b>Conjugation</b>	Unconjugated
<b>Tested Applications</b>	FC, IHC-P, WB
<b>Immunogen</b>	KLH conjugated synthetic peptide derived from human TREM2 (public_immunogen_range: 20-70/230)
<b>Form/Appearance</b>	Aqueous buffered solution containing 1% BSA, 50% glycerol and 0.09% sodium azide.
<b>Concentration</b>	1ug/ul
<b>Storage</b>	Store at -20°C for 12 months.
<b>Note</b>	For research use only.
<b>Isotype</b>	IgG
<b>Clonality</b>	Polyclonal
<b>Purity</b>	Purified by Protein A.
<b>Uniprot ID</b>	<a href="#">Q9NZC2</a>
<b>Entrez</b>	<a href="#">54209</a>
<b>Dilution Range</b>	WB: 1:300-1000, FC: 1:20-100, IHC-P: 1:200-400



Formalin-fixed and paraffin embedded human gastritis labeled with Rabbit Anti TREM2 Polyclonal Antibody, Unconjugated (bs-2723R) at 1:200 followed by conjugation to the secondary antibody and DAB staining.



Lane 1: MCF-7 cell lysates;  
Lane 2: Raw264.7 cell lysates  
probed with TREM2 Polyclonal Antibody, Unconjugated (bs-2723R) at 1:1000 dilution and 4°C overnight incubation. Followed by conjugated secondary antibody incubation at 1:20000 for 60 min at 37°C.