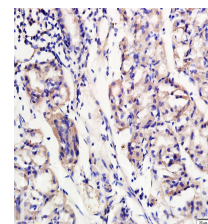


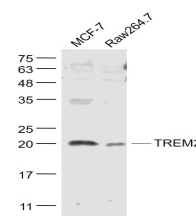
Product Datasheet

TREM2 Polyclonal Antibody GRP489

Description	May have a role in chronic inflammations and may stimulate production of constitutive rather than inflammatory chemokines and cytokines. Forms a receptor signaling complex with TYROBP and triggers activation of the immune responses in macrophages and dendritic cells.
Species/Host	Rabbit
Reactivity	Human, Mouse, Rat
Conjugation	Unconjugated
Tested Applications	FC, IHC-P, WB
Immunogen	KLH conjugated synthetic peptide derived from human TREM2 (public_immunogen_range: 20-70/230)
Form/Appearance	Aqueous buffered solution containing 1% BSA, 50% glycerol and 0.09% sodium azide.
Concentration	1ug/ul
Storage	Store at -20°C for 12 months.
Note	For research use only.
Isotype	IgG
Clonality	Polyclonal
Purity	Purified by Protein A.
Uniprot ID	Q9NZC2
Entrez	54209
Dilution Range	WB: 1:300-1000, FC: 1:20-100, IHC-P: 1:200-400



Formalin-fixed and paraffin embedded human gastritis labeled with Rabbit Anti TREM2 Polyclonal Antibody, Unconjugated (bs-2723R) at 1:200 followed by conjugation to the secondary antibody and DAB staining.



Lane 1: MCF-7 cell lysates;
Lane 2: Raw264.7 cell lysates
probed with TREM2 Polyclonal Antibody, Unconjugated (bs-2723R) at 1:1000 dilution and 4°C overnight incubation. Followed by conjugated secondary antibody incubation at 1:20000 for 60 min at 37°C.