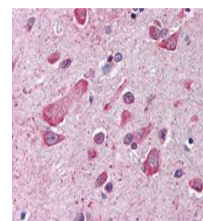


## Product Datasheet

### Cul1 (C-terminal specific) (RABBIT) Antibody GRP1556

<b>Species/Host</b>	Rabbit
<b>Reactivity</b>	Human
<b>Conjugation</b>	Unconjugated
<b>Tested Applications</b>	ELISA, IHC-P, IP, WB
<b>Concentration</b>	85 mg/mL
<b>Note</b>	For research use only.
<b>Isotype</b>	Antiserum
<b>Clonality</b>	Polyclonal
<b>Purity</b>	This product is monospecific antiserum processed by delipidation and defibrination followed by sterile filtration. This product reacts with human Cullin 1. Cross reactivity is expected against mouse Cul1 based on sequence homology.
<b>Source</b>	This antibody was prepared from whole rabbit serum produced by repeated immunizations with a synthetic peptide corresponding to the C-Terminal near amino acids 750-776 of Human Cul1 coupled to KLH.
<b>Uniprot ID</b>	<b>Q13616</b>
<b>Entrez</b>	<b>1401</b>
<b>Dilution Range</b>	ELISA: 1:2,000 - 1:10,000, Immunochemistry: 1:500, Immunoprecipitation: User Optimized, Western Blot: 1:500 - 1:1,000



CUL1 Antibody -  
Immunohistochemistry