

## Product Datasheet

### AKT1 antibody GRP47

#### Description

The serine-threonine protein kinase encoded by the AKT1 gene is catalytically inactive in serum-starved primary and immortalized fibroblasts. AKT1 and the related AKT2 are activated by platelet-derived growth factor. The activation is rapid and specific, and it is abrogated by mutations in the pleckstrin homology domain of AKT1. It was shown that the activation occurs through phosphatidylinositol 3-kinase. In the developing nervous system AKT is a critical mediator of growth factor-induced neuronal survival. Survival factors can suppress apoptosis in a transcription-independent manner by activating the serine/threonine kinase AKT1, which then phosphorylates and inactivates components of the apoptotic machinery. Multiple alternatively spliced transcript variants have been found for this gene. [provided by RefSeq]

#### Species/Host

Rabbit

#### Reactivity

Human, Mouse

#### Conjugation

Unconjugated

#### Tested Applications

ICC, IF, IHC-P, IP, WB

#### Immunogen

Recombinant protein encompassing a sequence within the center region of human Akt1. The exact sequence is proprietary.

#### Form/Appearance

Liquid: 1XPBS, 1% BSA, 20% Glycerol (pH7). 0.025% ProClin 300 was added as a preservative.

#### Concentration

0.47 mg/ml

#### Storage

Store as concentrated solution. Centrifuge briefly prior to opening vial. For short-term storage (1-2 weeks), store at 4°C. For long-term storage, aliquot and store at -20°C or below. Avoid multiple freeze-thaw cycles.

#### Note

For research use only.

#### Isotype

IgG

#### Clonality

Polyclonal

#### Purity

Purified by antigen-affinity chromatography.

#### Uniprot ID

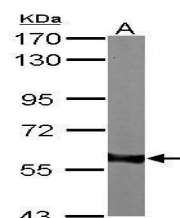
**P31749**

#### Entrez

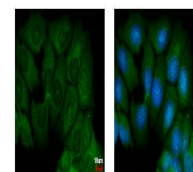
**207**

#### Dilution Range

WB: 1:1000-1:10000, ICC: 1:100-1:1000, IHC-P: 1:100-1:1000, IP: 1:100-1:500



Sample (50 ug of whole cell lysate) A: mouse liver 7.5% SDS PAGE GRP499 diluted at 1:1000



Akt1 antibody detects Akt1 protein at cytoplasm by immunofluorescent analysis. Sample: MCF-7 cells were fixed in ice-cold MeOH for 5 min. Green: Akt1 protein stained by Akt1 antibody (GRP499) diluted at 1:500. Blue: Hoechst 33342 staining.