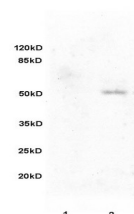


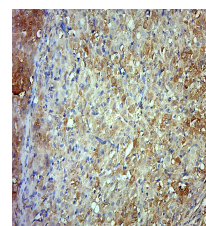
Product Datasheet

IL-22BP/IL22RA2 Polyclonal Antibody GRP487

Description	IL22RA2 is a member of the class II cytokine receptor family. The soluble protein specifically binds to and inhibits interleukin 22 activity by blocking the interaction of interleukin 22 with its cell surface receptor. IL22RA2 may be important in the regulation of inflammatory response, and has been implicated in the regulation of tumorigenesis in the colon. Alternative splicing results in multiple transcript variants encoding distinct isoforms. Isoform 2 is a receptor for IL22, and may play an important role as an IL22 antagonist in the regulation of inflammatory responses. Isoform 1 may play a role in establishing and maintaining a successful pregnancy.
Species/Host	Rabbit
Reactivity	Human, Mouse, Rat
Conjugation	Unconjugated
Tested Applications	FC, IHC-P, WB
Immunogen	KLH conjugated synthetic peptide derived from human IL22RA2 (public_immunogen_range: 195-230/263)
Form/Appearance	Aqueous buffered solution containing 1% BSA, 50% glycerol and 0.09% sodium azide.
Concentration	1ug/ul
Storage	Store at -20°C for 12 months.
Note	For research use only.
Isotype	IgG
Clonality	Polyclonal
Purity	Purified by Protein A.
Uniprot ID	Q969J5
Entrez	116379
Dilution Range	WB: 1:300-1000, FC: 1:20-100, IHC-P: 1:200-400



WB of GRP487



IHC-P of GRP487