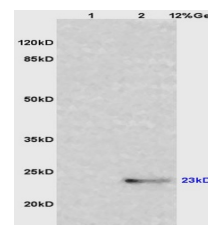


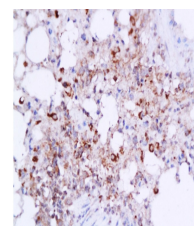
## Product Datasheet

### Caspase 3 Polyclonal Antibody GRP484

|                            |   |
|----------------------------|---|
| <b>Description</b>         | Involved in the activation cascade of caspases responsible for apoptosis execution. At the onset of apoptosis it proteolytically cleaves poly(ADP-ribose) polymerase (PARP) at a '216-Asp-I-Gly-217' bond. Cleaves and activates sterol regulatory element binding proteins (SREBPs) between the basic helix-loop-helix leucine zipper domain and the membrane attachment domain. Cleaves and activates caspase-6, -7 and -9. Triggers cell adhesion in sympathetic neurons through RET cleavage (By similarity). |
| <b>Species/Host</b>        | Rabbit  |
| <b>Reactivity</b>          | Human, Mouse, Rat   |
| <b>Conjugation</b>         | Unconjugated  |
| <b>Tested Applications</b> | FC, IHC-P, WB   |
| <b>Immunogen</b>           | KLH conjugated synthetic peptide derived from rat Caspase 3 (public_immunogen_range: 1-45/277)  |
| <b>Form/Appearance</b>     | Aqueous buffered solution containing 1% BSA, 50% glycerol and 0.09% sodium azide.   |
| <b>Concentration</b>       | 1ug/ul  |
| <b>Storage</b>             | Store at -20°C for 12 months.   |
| <b>Note</b>                | For research use only.  |
| <b>Isotype</b>             | IgG   |
| <b>Clonality</b>           | Polyclonal  |
| <b>Purity</b>              | Purified by Protein A.  |
| <b>Uniprot ID</b>          | <b>P55213</b>   |
| <b>Entrez</b>              | <b>25402</b>  |
| <b>Dilution Range</b>      | WB: 1:300-1000, FC: 1:20-100, IHC-P: 1:200-400  |



WB of GRP484



IHC-P of GRP484