

Product Datasheet

EGFRv3 Polyclonal Antibody GRP482

Description

Receptor tyrosine kinase binding ligands of the EGF family and activating several signaling cascades to convert extracellular cues into appropriate cellular responses. Known ligands include EGF, TGFA/TGF-alpha, amphiregulin, epigen/EPGN, BTC/betacellulin, epiregulin/EREG and HBEGF/heparin-binding EGF. Ligand binding triggers receptor homo- and/or heterodimerization and autophosphorylation on key cytoplasmic residues. The phosphorylated receptor recruits adapter proteins like GRB2 which in turn activates complex downstream signaling cascades. Activates at least 4 major downstream signaling cascades including the RAS-RAF-MEK-ERK, PI3 kinase-AKT, PLCgamma-PKC and STATs modules. May also activate the NF-kappa-B signaling cascade. Also directly phosphorylates other proteins like RGS16, activating its GTPase activity and probably coupling the EGF receptor signaling to the G protein-coupled receptor signaling. Also phosphorylates MUC1 and increases its interaction with SRC and CTNNB1/beta-catenin. Isoform 2 may act as an antagonist of EGF action.

Species/Host

Rabbit

Reactivity

Human

Conjugation

Unconjugated

Tested Applications

IHC-P, WB

Immunogen

KLH conjugated synthetic peptide derived from human EGFRvIII (public_immunogen_range: 1-50/1081)

Form/Appearance

Aqueous buffered solution containing 1% BSA, 50% glycerol and 0.09% sodium azide.

Concentration

1ug/ul

Storage

Store at -20°C for 12 months.

Note

For research use only.

Isotype

IgG

Clonality

Polyclonal

Purity

Purified by Protein A.

Uniprot ID

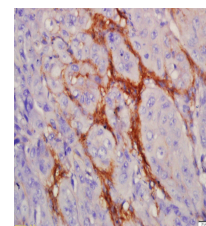
Q59FL8

Entrez

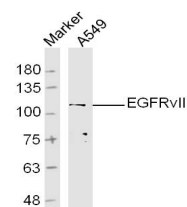
1956

Dilution Range

WB: 1:300-1000, IHC-P: 1:200-400



Formalin-fixed and paraffin embedded human laryngocarcinoma labeled with Anti-EGFRvIII Polyclonal Antibody, Unconjugated (GRP482) at 1:200 followed by conjugation to the secondary antibody and DAB staining



A549 Cells lysates probed with EGFRvIII Polyclonal Antibody, unconjugated (GRP482) at 1:300 overnight at 4°C followed by a conjugated secondary antibody at 1:10000 for 60