

## Product Datasheet

# Collagen Type II (RABBIT) Antibody Fluorescein Conjugated GRP3969

**Description** Anti-Collagen Type II (RABBIT) Antibody Fluorescein Conjugated

**Species/Host** Rabbit

**Reactivity** Human, Bovine

**Conjugation** FITC

**Tested Applications** ELISA, FC, IF, IHC-P, IP, WB

**Form/Appearance** 0.01 M Sodium Phosphate, 0.25 M Sodium Chloride, pH 7.2

**Concentration** 1.0 mg/ml

**Note** For research use only.

**Isotype** IgG

**Clonality** Polyclonal

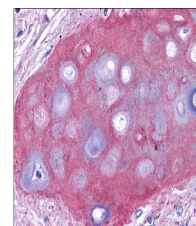
**Source** Anti-Collagen Type II antibody was produced by repeated immunizations with Collagen Type II from adult human knee cartilage and bovine nasal cartilage.

**Uniprot ID** **P02458**

**Entrez** **126961**

**Dilution Range** ELISA: 1:10,000 - 1:50,000, Flow Cytometry: User Optimized, Immunochemistry: 1:200 - 1:1,000, IF Microscopy: User Optimized, Immunoprecipitation: 1:100, Western Blot: User Optimized

**Application Notes** Anti-Collagen Type II Fluorescein Conjugated Antibody is suitable for western blotting, IP, IHC and for ELISA. Researchers should determine optimal titers for applications that are not stated below.



Anti-Collagen II Biotin Conjugated Antibody – Immunohistochemistry