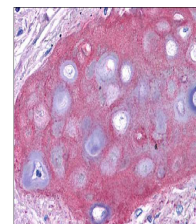


Product Datasheet

Collagen Type II (RABBIT) Antibody Biotin Conjugated GRP4045

Description	Anti-Collagen Type II (RABBIT) Antibody Biotin Conjugated
Species/Host	Rabbit
Reactivity	Human, Bovine
Conjugation	Biotin
Tested Applications	ELISA, IHC-P, IP, WB
Form/Appearance	0.02 M Potassium Phosphate, 0.15 M Sodium Chloride, pH 7.2
Concentration	1.0 mg/mL
Note	For research use only.
Isotype	IgG
Clonality	Polyclonal
Source	Anti-Collagen Type II antibody was produced by repeated immunizations with Collagen Type II from adult human knee cartilage and bovine nasal cartilage.
Uniprot ID	P02458
Entrez	126961
Dilution Range	ELISA: 1:10,000 - 1:50,000, Immunochemistry: 1:200 - 1:1,000, Immunoprecipitation: 1:100, Western Blot: 1:5,000 - 1:10,000



Anti-Collagen II Biotin Conjugated Antibody – Immunohistochemistry

Application Notes Anti-Collagen Type II antibody is suitable for western blotting, IP, IHC and for ELISA. Researchers should determine optimal titers for applications that are not stated below.