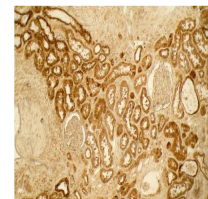


Product Datasheet

Collagen Type I (RABBIT) Antibody GRP3329

Description	Anti-Collagen Type I (RABBIT) Antibody
Species/Host	Rabbit
Reactivity	Human, Bovine
Conjugation	Unconjugated
Tested Applications	ELISA, IHC-P, IP, WB
Form/Appearance	0.02 M Potassium Phosphate, 0.15 M Sodium Chloride, pH 7.2
Concentration	1.0 mg/mL
Note	For research use only.
Isotype	IgG
Clonality	Polyclonal
Source	Collagen Type I from human and bovine placenta
Uniprot ID	P02452
Entrez	126961
Dilution Range	ELISA: 1:5,000 - 1:50,000, FLISA: 1:100, Immunochemistry: 1:50 - 1:200, Immunoprecipitation: 1:100, Western Blot: 1:1,000 - 1:10,000



Immunohistochemistry -
Collagen I antibody