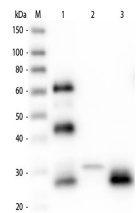


## Product Datasheet

# CHICKEN IgG F(ab')<sub>2</sub> (RABBIT) Antibody Fluorescein Conjugated GRP4218

<b>Description</b>	Anti-CHICKEN IgG F(ab') <sub>2</sub> (RABBIT) Antibody Fluorescein Conjugated
<b>Species/Host</b>	Rabbit
<b>Conjugation</b>	FITC
<b>Tested Applications</b>	FC, IF, IHC-P
<b>Form/Appearance</b>	0.01 M Sodium Phosphate, 0.15 M Sodium Chloride, pH 7.2
<b>Concentration</b>	1.5 mg/mL
<b>Note</b>	For research use only.
<b>Isotype</b>	IgG
<b>Clonality</b>	Polyclonal
<b>Source</b>	Chicken IgG F(ab') <sub>2</sub> fragment
<b>Entrez</b>	<b>3320</b>
<b>Dilution Range</b>	FLISA: 1:10,000 - 1:50,000, Flow Cytometry: 1:500 - 1:2,500, Fluorochrome: 3.2, IF Microscopy: 1:1,000 - 1:5,000

**Application Notes** Suitable for immunomicroscopy and flow cytometry or FACS analysis as well as other antibody based fluorescent assays requiring extremely low background levels, absence of F(c) mediated binding, lot-to-lot consistency, high titer and specificity.



Western Blot of Anti-Chicken IgG F(ab')<sub>2</sub> (RABBIT) Antibody