

Product Datasheet

CHICKEN IgG F(ab')₂ (RABBIT) Antibody Alkaline Phosphatase Conjugated GRP4225

Description Anti-CHICKEN IgG F(ab')₂ (RABBIT) Antibody Alkaline Phosphatase Conjugated

Species/Host Rabbit

Reactivity Chicken

Conjugation AP

Tested Applications ELISA, IHC-P, WB

Form/Appearance 0.05 M Tris Chloride, 0.15M Sodium Chloride, 0.001M Magnesium Chloride, 0.0001M Zinc Chloride, 50% (v/v) Glycerol; pH 8.0

Concentration 1.0 mg/mL

Storage Store vial at 4 °C before opening. DO NOT FREEZE. This product is stable at 4 °C as an undiluted liquid. Dilute only prior to immediate use. Freezing alkaline phosphatase conjugates will result in a substantial loss of enzymatic activity.

Note For research use only.

Isotype IgG

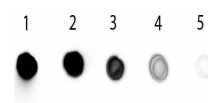
Clonality Polyclonal

Source Chicken IgG F(ab')₂ fragment

Entrez [10014](#)

Dilution Range ELISA: 1:3,500, Immunochemistry: 1:200 - 1:1,000, Western Blot: 1:500 - 1:2,500

Application Notes Anti-Chicken IgG F(ab')₂ antibody is suitable for immunoblotting (western or dot blot), ELISA, immunoelectron microscopy and immunohistochemistry as well as other antibody based enzymatic assays requiring lot-to-lot consistency.



Chicken IgG Fab2
Antibody
Alkaline Phosphatase
Conjugated - Dot Blot