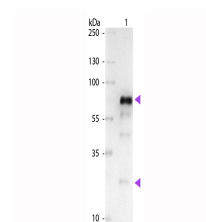


## Product Datasheet

### CHICKEN IgG (H&L) (GOAT) Antibody Alkaline Phosphatase Conjugated (Min X Bv Gt GP Ham Hs Hu Ms Rb Rt & Sh Serum Proteins) GRP4202

<b>Description</b>	Anti-CHICKEN IgG (H&L) (GOAT) Antibody Alkaline Phosphatase Conjugated (Min X Bv Gt GP Ham Hs Hu Ms Rb Rt & Sh Serum Proteins)
<b>Species/Host</b>	Goat
<b>Reactivity</b>	Chicken
<b>Conjugation</b>	AP
<b>Tested Applications</b>	ELISA, IHC-P, WB
<b>Form/Appearance</b>	0.05 M Tris Chloride, 0.15M Sodium Chloride, 0.001M Magnesium Chloride, 0.0001M Zinc Chloride, 50% (v/v) Glycerol; pH 8.0
<b>Concentration</b>	1.0 mg/mL
<b>Storage</b>	Store vial at 4 °C before opening. DO NOT FREEZE. This product is stable at 4 °C as an undiluted liquid. Dilute only prior to immediate use. Freezing alkaline phosphatase conjugates will result in a substantial loss of enzymatic activity.
<b>Note</b>	For research use only.
<b>Isotype</b>	IgG
<b>Clonality</b>	Polyclonal
<b>Source</b>	Anti-Chicken IgG whole molecule was produced by repeated immunization with Chicken IgG whole molecule in goat.
<b>Entrez</b>	<a href="#">2817</a>
<b>Dilution Range</b>	ELISA: 1:2,000 - 1:10,000, Immunochemistry: 1:200 - 1:1,000, Western Blot: 1:500 - 1:2,500
<b>Application Notes</b>	Anti-Chicken IgG whole molecule is suitable for use in immunoelectrophoresis, western-blot, competitive western-blot, ELISA and competitive ELISA assays. Specific conditions for reactivity and signal detection should be optimized by the end user.



WB - Chicken IgG (H&L)  
Antibody Alkaline  
Phosphatase  
Conjugated Pre-Adsorbed