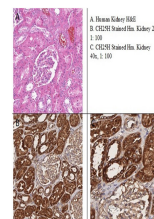


Product Datasheet

CH25H (RABBIT) Antibody GRP3955

Description	Anti-CH25H (RABBIT) Antibody
Species/Host	Rabbit
Reactivity	Human
Conjugation	Unconjugated
Tested Applications	ELISA, IHC-P, WB
Form/Appearance	0.02 M Potassium Phosphate, 0.15 M Sodium Chloride, pH 7.2
Concentration	0.92 mg/ml
Note	For research use only.
Isotype	IgG
Clonality	Polyclonal
Source	Anti-CH25H antibody was prepared from whole rabbit serum produced by repeated immunizations with a synthetic peptide corresponding to a C-Terminal region of human CH25H conjugated to Keyhole Limpet Hemocyanin (KLH).
Uniprot ID	095992
Entrez	6960048
Dilution Range	ELISA: 1:10,000-1:50,000, Immunochemistry: 1:100, Western Blot: 1:1,000

Application Notes Anti-CH25H Antibody has been tested in ELISA, WB, and IHC. Expect a band at ~31.7kDa in western blot using appropriate tissues or lysates. Positive control used: Human Kidney Tissues in Immunohistochemistry.



Immunohistochemistry of
Rabbit
Anti-CH25H Antibody