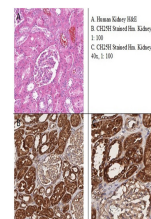


## Product Datasheet

### CH25H (RABBIT) Antibody GRP3955

<b>Description</b>	Anti-CH25H (RABBIT) Antibody
<b>Species/Host</b>	Rabbit
<b>Reactivity</b>	Human
<b>Conjugation</b>	Unconjugated
<b>Tested Applications</b>	ELISA, IHC-P, WB
<b>Form/Appearance</b>	0.02 M Potassium Phosphate, 0.15 M Sodium Chloride, pH 7.2
<b>Concentration</b>	0.92 mg/ml
<b>Note</b>	For research use only.
<b>Isotype</b>	IgG
<b>Clonality</b>	Polyclonal
<b>Source</b>	Anti-CH25H antibody was prepared from whole rabbit serum produced by repeated immunizations with a synthetic peptide corresponding to a C-Terminal region of human CH25H conjugated to Keyhole Limpet Hemocyanin (KLH).
<b>Uniprot ID</b>	<b>O95992</b>
<b>Entrez</b>	<b>6960048</b>
<b>Dilution Range</b>	ELISA: 1:10,000-1:50,000, Immunochemistry: 1:100, Western Blot: 1:1,000

**Application Notes** Anti-CH25H Antibody has been tested in ELISA, WB, and IHC. Expect a band at ~31.7kDa in western blot using appropriate tissues or lysates. Positive control used: Human Kidney Tissues in Immunohistochemistry.



Immunohistochemistry of  
Rabbit  
Anti-CH25H Antibody