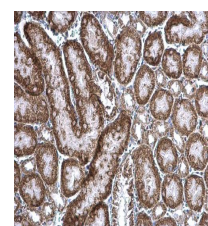


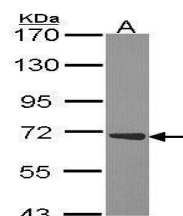
Product Datasheet

clAP1 antibody GRP44

Description	The protein encoded by this gene is a member of a family of proteins that inhibits apoptosis by binding to tumor necrosis factor receptor-associated factors TRAF1 and TRAF2, probably by interfering with activation of ICE-like proteases. This encoded protein inhibits apoptosis induced by serum deprivation and menadione, a potent inducer of free radicals. [provided by RefSeq]
Species/Host	Rabbit
Reactivity	Human, Mouse, Rat
Conjugation	Unconjugated
Tested Applications	IHC-P, WB
Immunogen	Recombinant protein encompassing a sequence within the center region of human clAP1. The exact sequence is proprietary.
Form/Appearance	Liquid: 0.1M Tris, 0.1M Glycine, 10% Glycerol (pH7). 0.01% Thimerosal was added as a preservative.
Concentration	1 mg/ml
Storage	Store as concentrated solution. Centrifuge briefly prior to opening vial. For short-term storage (1-2 weeks), store at 4°C. For long-term storage, aliquot and store at -20°C or below. Avoid multiple freeze-thaw cycles.
Note	For research use only.
Isotype	IgG
Clonality	Polyclonal
Purity	Purified by antigen-affinity chromatography.
Uniprot ID	Q13490
Entrez	329
Dilution Range	WB: 1:500-1:3000, IHC-P: 1:100-1:1000



clAP1 antibody detects clAP1 protein at cytoplasm on mouse kidney by immunohistochemical analysis. Sample: Paraffin-embedded mouse kidney. clAP1 antibody (GRP496) diluted at 1:500.



Sample (30 µg of whole cell lysate) A: JurKat 7.5% SDS PAGE GRP496 diluted at 1:1000. The HRP-conjugated anti-rabbit IgG antibody was used to detect the primary antibody.