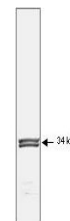


Product Datasheet

cdc2 (p34) (MOUSE) Monoclonal Antibody GRP2043

Description	Anti-cdc2 (p34) (MOUSE) Monoclonal Antibody
Species/Host	Mouse
Reactivity	Human
Conjugation	Unconjugated
Tested Applications	ELISA, IP, WB
Form/Appearance	0.02 M Potassium Phosphate, 0.5 M Sodium Chloride, pH 7.2
Concentration	1.0 mg/mL
Note	For research use only.
Isotype	IgG2a
Clonality	Monoclonal
Source	This protein A purified monoclonal antibody was produced by repeated immunizations with recombinant human p34 cdc2 fusion protein.
Clone ID	POH-1
Uniprot ID	P06493
Entrez	281785
Dilution Range	ELISA: 1:5,000 - 1:20,000, Immunoprecipitation: 1:100, Western Blot: 1:500 - 1:1,000



Anti-Human p34cdc2
Monoclonal
Antibody - Western Blot