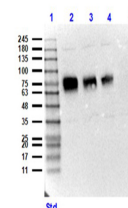


## Product Datasheet

### CD68 (RABBIT) Antibody GRP3958

<b>Description</b>	Anti-CD68 (RABBIT) Antibody
<b>Species/Host</b>	Rabbit
<b>Reactivity</b>	Mouse
<b>Conjugation</b>	Unconjugated
<b>Tested Applications</b>	ELISA, WB
<b>Form/Appearance</b>	0.02 M Potassium Phosphate, 0.15 M Sodium Chloride, pH 7.2
<b>Concentration</b>	1.02 mg/ml
<b>Note</b>	For research use only.
<b>Isotype</b>	IgG
<b>Clonality</b>	Polyclonal
<b>Source</b>	CD68 affinity purified antibody was prepared from whole rabbit serum produced by repeated immunizations with a synthetic peptide corresponding to a near C-terminal region of mouse CD68.
<b>Uniprot ID</b>	<b>P31996</b>
<b>Entrez</b>	<b>20526</b>
<b>Dilution Range</b>	ELISA: 1:10,000-1:50,000, Western Blot: 1:1000

**Application Notes** Anti-CD68 Antibody has been tested in ELISA and Western Blot. Expect a band at ~34.8Da in western blot using appropriate tissues and lysates. Positive control used: mouse heart and kidney in WB.



Western Blot of Rabbit  
Anti-CD68 Antibody - rec  
detection