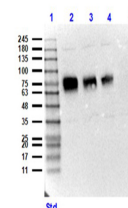


Product Datasheet

CD68 (RABBIT) Antibody GRP3958

Description	Anti-CD68 (RABBIT) Antibody
Species/Host	Rabbit
Reactivity	Mouse
Conjugation	Unconjugated
Tested Applications	ELISA, WB
Form/Appearance	0.02 M Potassium Phosphate, 0.15 M Sodium Chloride, pH 7.2
Concentration	1.02 mg/ml
Note	For research use only.
Isotype	IgG
Clonality	Polyclonal
Source	CD68 affinity purified antibody was prepared from whole rabbit serum produced by repeated immunizations with a synthetic peptide corresponding to a near C-terminal region of mouse CD68.
Uniprot ID	P31996
Entrez	20526
Dilution Range	ELISA: 1:10,000-1:50,000, Western Blot: 1:1000

Application Notes Anti-CD68 Antibody has been tested in ELISA and Western Blot. Expect a band at ~34.8Da in western blot using appropriate tissues and lysates. Positive control used: mouse heart and kidney in WB.



Western Blot of Rabbit
Anti-CD68 Antibody - rec
detection