

Product Datasheet

CRMP2 Polyclonal Antibody GRP434

Description

Collapsin response mediator proteins (CRMPs) are cytosolic phosphoproteins involved in neuronal differentiation and axonal guidance. CRMP2 was previously shown to mediate the repulsive effect of Sema3A on axons and to participate in axonal specification. The CRMPs appear to play a complex role in axon growth as well as microtubule dynamics and axon induction. CRMPs localize to the lamellipodia and filopodia of axonal growth cones, suggesting a role in axon guidance. Moreover, CRMP2 is upregulated after axotomy, and appears to increase the formation of axon-type processes from hippocampal neurons. CRMP2 has been reported to bind tubulin dimers directly and modulate microtubule assembly. CRMPs have also been implicated in the pathogenesis of a paraneoplastic neurologic syndrome. Interaction studies have implicated phospholipase D2 (PLD2), the cytosolic tyrosine kinase Fes, and intersectin in CRMP function. Hyperphosphorylation of CRMP2 is an early event in the progression of Alzheimer's disease.

Species/Host

Rabbit

Reactivity

Human, Mouse, Rat

Conjugation

Unconjugated

Tested Applications

IHC-P, WB

Immunogen

KLH conjugated synthetic peptide derived from human CRMP2 (public_immunogen_range: 1-50/572)

Form/Appearance

Aqueous buffered solution containing 1% BSA, 50% glycerol and 0.09% sodium azide.

Concentration

1ug/ul

Storage

Store at -20°C for 12 months.

Note

For research use only.

Isotype

IgG

Clonality

Polyclonal

Purity

Purified by Protein A.

Uniprot ID

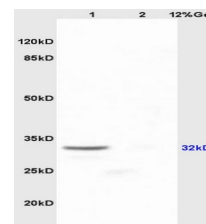
Q16555

Entrez

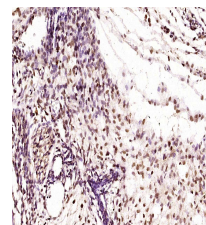
1808

Dilution Range

WB: 1:300-1000, IHC-P: 1:200-400



WB of GRP434



IHC-P of GRP434