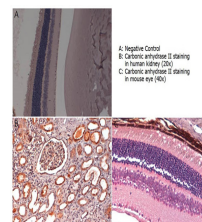


Product Datasheet

CARBONIC ANHYDRASE II (RABBIT) Antibody GRP2283

| | |
|----------------------------|--|
| Description | Anti-CARBONIC ANHYDRASE II (RABBIT) Antibody |
| Species/Host | Rabbit |
| Reactivity | Human, Mouse |
| Conjugation | Unconjugated |
| Tested Applications | ELISA, IHC-P, WB |
| Form/Appearance | 0.02 M Potassium Phosphate, 0.15 M Sodium Chloride, pH 7.2 |
| Concentration | 1.1 mg/mL |
| Note | For research use only. |
| Isotype | IgG |
| Clonality | Polyclonal |
| Source | Carbonic Anhydrase II Antibody was produced by repeated immunizations with human erythrocytes Carbonic Anhydrase II. |
| Uniprot ID | P00918 |
| Entrez | 1730 |
| Dilution Range | ELISA: 1:165,000, Immunochemistry: User Optimized, Western Blot: 1:2000 to 1:10,000 |
| Application Notes | Carbonic Anhydrase II Antibody is suitable for western blotting, ELISA and IHC. Expect ~29.2kDa. Researchers should determine optimal titers for applications that are not stated below. |



IHC - Carbonic Anhydrase II Antibody