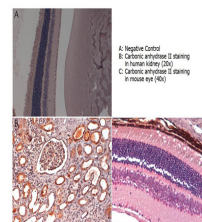


Product Datasheet

CARBONIC ANHYDRASE II (RABBIT) Antibody GRP2282

Description	Anti-CARBONIC ANHYDRASE II (RABBIT) Antibody
Species/Host	Rabbit
Reactivity	Human, Mouse
Conjugation	Unconjugated
Tested Applications	ELISA, IHC-P, WB
Form/Appearance	0.02 M Potassium Phosphate, 0.15 M Sodium Chloride, pH 7.2
Concentration	1.0 mg/mL
Note	For research use only.
Isotype	IgG
Clonality	Polyclonal
Source	Carbonic Anhydrase II Antibody was produced by repeated immunizations with human erythrocytes Carbonic Anhydrase II.
Uniprot ID	P00918
Entrez	1730
Dilution Range	ELISA: 1:165,000, Immunochemistry: User Optimized, Western Blot: 1:2000 to 1:10,000
Application Notes	Carbonic Anhydrase II Antibody is suitable for western blotting, ELISA and IHC. Expect ~29.2kDa. Researchers should determine optimal titers for applications that are not stated below.



IHC - Carbonic Anhydrase
II
Antibody