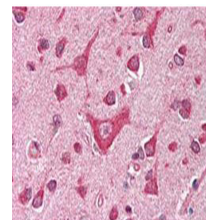


Product Datasheet

CaM Kinase IV (RABBIT) Antibody GRP1550

Species/Host	Rabbit
Reactivity	Human, Mouse, Rat
Conjugation	Unconjugated
Tested Applications	ELISA, IHC-P, WB
Form/Appearance	0.02 M Potassium Phosphate, 0.15 M Sodium Chloride, pH 7.2
Concentration	70 mg/mL
Note	For research use only.
Isotype	Antiserum
Clonality	Polyclonal
Source	This antiserum was prepared from whole rabbit serum produced by repeated immunizations with a synthetic peptide corresponding to an internal region near amino acids 300-325 of Human CaM Kinase IV protein.
Uniprot ID	Q16566
Entrez	1194341
Dilution Range	ELISA: 1:5,000 - 1:25,000, Immunochemistry: 1:500, Western Blot: 1:500 - 1:2,000



Anti-CAMK4 Antibody -
Immunohistochemistry