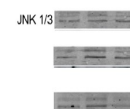


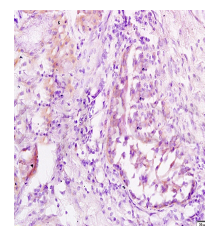
## Product Datasheet

### Wnt1 Polyclonal Antibody GRP429

<b>Description</b>	Ligand for members of the frizzled family of seven transmembrane receptors. In some developmental processes, is also a ligand for the coreceptor RYK, thus triggering Wnt signaling. Probable developmental protein. May be a signaling molecule important in CNS development. Is likely to signal over only few cell diameters. Has a role in osteoblast function and bone development.
<b>Species/Host</b>	Rabbit
<b>Reactivity</b>	Human, Mouse, Rat
<b>Conjugation</b>	Unconjugated
<b>Tested Applications</b>	IHC-P, WB
<b>Immunogen</b>	KLH conjugated synthetic peptide derived from human Wnt1 (public_immunogen_range: 255-300/370)
<b>Form/Appearance</b>	Aqueous buffered solution containing 1% BSA, 50% glycerol and 0.09% sodium azide.
<b>Concentration</b>	1ug/ul
<b>Storage</b>	Store at -20°C for 12 months.
<b>Note</b>	For research use only.
<b>Isotype</b>	IgG
<b>Clonality</b>	Polyclonal
<b>Purity</b>	Purified by Protein A.
<b>Uniprot ID</b>	<b>P04628</b>
<b>Entrez</b>	<b>7471</b>
<b>Dilution Range</b>	WB: 1:300-1000, IHC-P: 1:200-400



WB of GRP429



IHC-P of GRP429